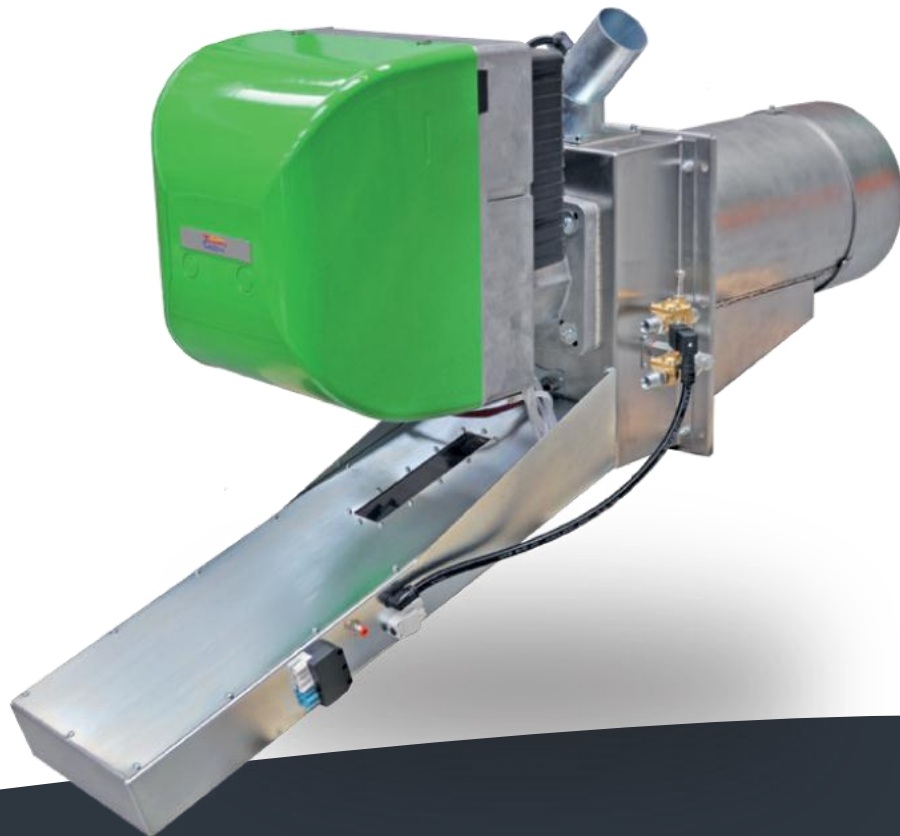




Next-generation Biomass Technology



Bruciatori ad agripellet  
Agripellet burners

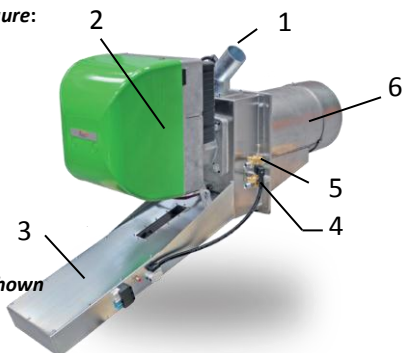
**SPL200 BA-350 BA**

Scheda Tecnica  
ITA-ENG

Ed.02/12

**Componenti Visibili in figura - Visible components in figure:**

- 1) tubo alimentazione – feeding tube;
- 2) ventilatore – fan group;
- 3) Cassetto pulizia meccanica - Mechanical cleaning;
- 4) Pulizia automatica ad aria compressa sotto-griglia – Compressed air automatic cleaning kit below the grill;
- 5) Pulizia automatica ad aria compressa sopra la griglia - Automatic cleaning with compressed air above the grill;
- 6) Boccaglio – mouthpiece specula;



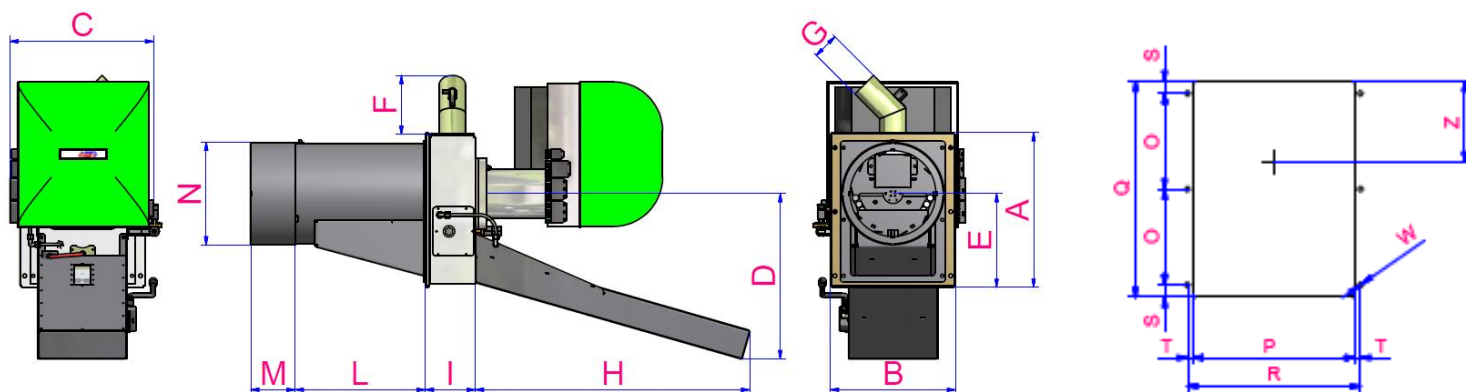
**Componenti non mostrati in figura - Components not shown in figure:**

- Termostato di sicurezza - Safety thermostat
- Pressostato di sicurezza - Safety pressostat

Componenti base Basic Components	Accessori Opzionali Optional components
Bruciatore Burner	Contenitore pellet Pellet container
Pannello di controllo Control panel	Valvola stellare Rotary valve
Coclea di alimentazione Feeding screw	
Stazione accumulo aria compressa Compressed air tanks	
Kit di pulizia automatica Automatic cleaning kit	

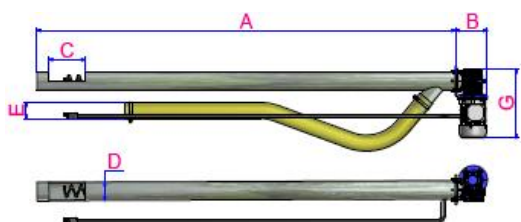
**DATI TECNICI - TECHNICAL DATA**

Model	BRUCIATORE BURNER					COCLEA FEEDING SCREW	
	Potenzialità Power kW		Alimentazione Elettrica Electrical power		Motore ventilatore Fan engine	Motore Engine	
	Min	Max	V	Hz	W	W	
SPL200 BA	100	160	230	50	370	650	180
SPL300 BA	150	280	230	50	370	650	180
SPL350 BA	150	350	230	50	370	650	180



**DIMENSIONI DI INGOMBRO – FOOTPRINT SIZES**

Model	BRUCIATORE – BURNER mm												FORATURA PORTELLONE CALDAIA – BOILER DOOR mm							
	A	B	C	D	E	F	G	H	I	L	M	N	O	P	Q	R	S	T	W	Z
SPL200 BA	391	306	440	379	236.5	180	80	727	150	351	130	253	150	255	350	277	25	11	M10	134
SPL300 BA	471	381	440	502	285.5	180	80	835	150	396	135	312	195	330	440	352	25	11	M10	165
SPL350 BA	501	381	440	491	315	180	80	1045	150	496	135	312	195	330	440	352	25	11	M10	165



**DIMENSIONI INGOMBRO DELLA COCLEA – FEEDING SCREW FOOTPRINT**  
mm

Model	A	B	C	D	E	F	G
SPL200 BA-300 BA-350 BA	1740	200	200	102	80	150	360